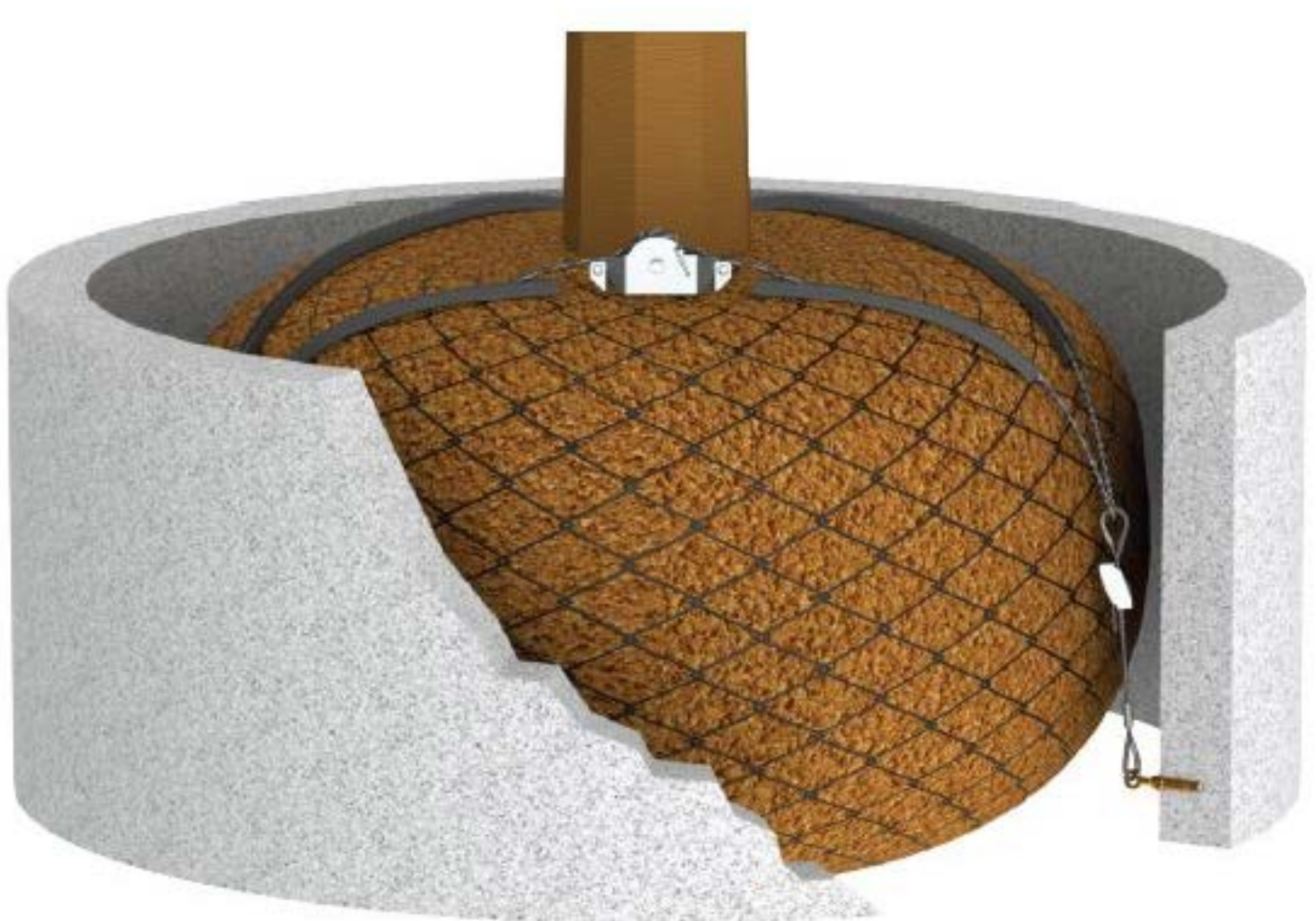


# Containerised Rootball Fixing Kit - Wired GTCRBK-W

## Instructions



## Installation Method

1. Mark the insertion points of the eyebolts within the container. Make sure that the points are equally spaced at 120 degrees to each other around the diameter of the rootball (Fig: 1).
2. Install the eyebolts into position around the rootball once the marked positions are correct (Fig: 2).
3. Install the rootball into the container once the eyebolts have been installed.
4. Cut the rubber rootball protector to desired length. Lay the 3 strips of Rootball Protector over the rootball (Fig: 3).
5. Using the wire attached to the eye bolt, create a loop using the Fastlink wire joiner and steel thimble to make a hard eye. The loop created must sit approx.  $\frac{3}{4}$  up from the bottom of the rootball (Fig: 3).
6. Thread the free end of the tensioning cable (which is attached to the ratchet tensioner) through the installed hard eye loops and over the rootball protector (Fig: 3).
7. Once the tensioning cable has been threaded through the hard eyes correctly then pass the free end of the tensioning cable through the hole in the ratchet wheel ensuring the wire goes under the spring on the ratchet.
8. Pull most of the slack tensioning cable through ensuring that the cable is now tight through the loops and holding down the rootball protector and cut off any excess wire over 30mm.
9. With a short tail of cable (30mm) protruding twist the ratchet wheel clockwise (with ratchet tensioner) to tighten the tensioning cable. Tuck the tail of the cable under the first few windings to prevent it pulling out and to stop it fouling the ratchet bar.
10. While Tensioning check that each leg of the tensioning cable is getting tight and that it is central on the rootball protector strips.
11. When satisfied that the rootball is well secured to the container lock off the ratchet tensioner by ensuring that the ratchet bar is in the bottom of the slot and seated at the root of the ratchet wheel teeth.
12. Back fill with chosen growing media.
13. Remove and dispose of the waste cable.
14. It is advisable to re-check tree anchor kits after 2-3 days as rootball may settle. Re-tighten if necessary.

Fig: 1



Fig: 2

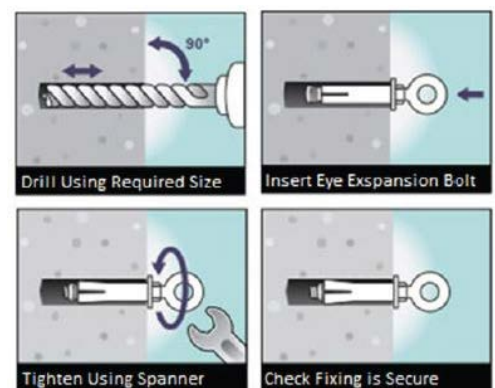
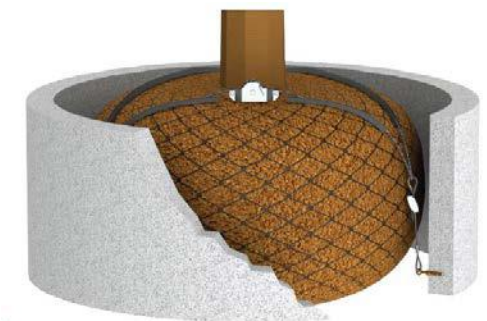


Fig: 3



Code	Description	Tree Height / Circumference	Installation Tools Required				
			Drive Rods	Installation	Rod Removers	Load Locking	Tensioners
GTCRBK5W	3 x expanding eye bolts connected to wire slings, 2m of galv wire, 1 x ratchet tensioner, 3 x rootball protector, 3 x fastlink joiners	2.5m - 4.5m / 12cm - 25cm	N/A	N/A	N/A	N/A	RT1
GTCRBK10W	3 x expanding eye bolts connected to wire slings, 5m of galv wire, 1 x ratchet tensioner, 3 x rootball protector, 3 x fastlink joiners	4.5m - 7.5m / 25cm - 45cm	N/A	N/A	N/A	N/A	RT1